



MANCHESTER STATE FOREST

6740 HEADQUARTERS ROAD
WEDGEFIELD, SOUTH CAROLINA 29168-9715
PH: 803-494-8196 • FAX: 803-494-8314

SALE MSF 590 ADV TS 19 December 15, 2018

Sealed lump sum bids will be accepted until 11 AM, January 7, 2019, by Manchester State Forest, 6740 Headquarters Road, Wedgefield, SC, for the sale of approximately 2,576 tons of pine pulpwood, 2,331 tons of pine chip-n-saw, 3,424 tons of pine sawtimber on approximately 183 acres. Bids will be accepted in person or by email to bkendall@scfc.gov. The seller does not guarantee the approximate volume stated above, and each bidder is encouraged to make their own determination of volumes.

This sale consists of three (3) blocks containing approximately 180 acres to be final harvested. The sale boundaries are indicated on the attached map and are marked with orange paint. No log decks, tops, or equipment will be allowed in stands or open areas adjoining the sale area. Damage to adjoining areas will be assessed against the buyer's performance bond. Existing roads and firebreaks may be used but must be left free of logging debris and in reasonable condition. All recreational trails will be given protection.

A pre-harvest conference between the successful bidder and the sales administrator of Manchester State Forest will be held prior to commencement of harvest and BMP compliance will be required.

Payment in the full amount of the bid is to be within ten (10) days of notification of Forestry Commission approval. The successful bidder shall also post, along with the full amount of the bid, a performance bond in the amount of fifteen percent (15%) of the total lump-sum bid price. The successful bidder will have twelve (12) months to remove the timber.

Manchester State Forest is certified through the Sustainable Forestry Initiative® (SFI) and The American Tree Farm System® (ATFS) Standards. A copy of our Sustainable Forestry Policy is available on our website: www.state.sc.us/forest/.

For additional information, contact Ben Kendall, Assistant Forest Director. Please indicate on the envelope containing your bid the following: BID ON FOREST PRODUCTS, MANCHESTER STATE FOREST, SALE 590.

The SC Forestry Commission reserves the right to reject any or all bids.

Ben Kendall
Assistant Forest Director

Attachments



Pond Rd

River Rd

MA001-0156

MA001-0155

Poinsett Park Rd

Center Trail

MA003-0026

Milford Plantation Rd

MA003-0026

Christmas Mill



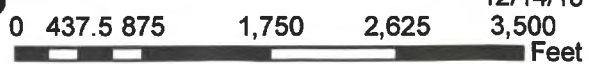
Stand	Acres	Legend
MA003-1203	47	Roads
MA001-0155	66	Road_Type
MA001-0156	12	— County Road
MA003-0026	55	- - - Forest Road
		 MSF590

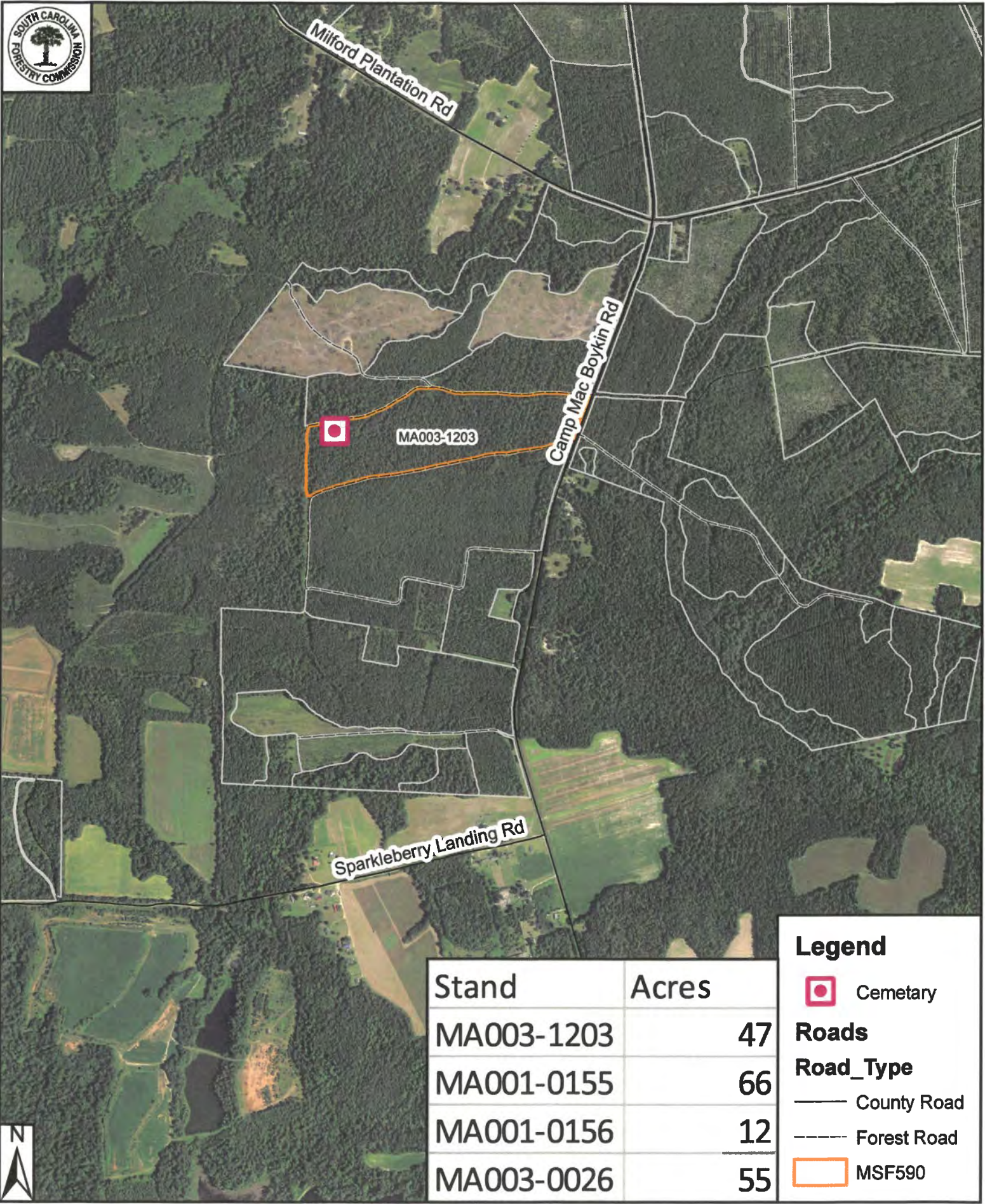
Disclaimer:
Reasonable efforts have been made to ensure the accuracy of this map. However, boundaries and acres are approximate. I disclaim responsibility for damage or liability that may arise from the use of this map.

Manchester State Forest
MSF 590 ADV TS 19
180 Acres

1 inch = 1,320 feet

Produced by:
Ben Kendall
12/14/18





Stand	Acres
MA003-1203	47
MA001-0155	66
MA001-0156	12
MA003-0026	55

Legend

- Cemetary
- Roads**
- Road_Type**
- County Road
- Forest Road
- MSF590

Disclaimer:
Reasonable efforts have been made to ensure the accuracy of this map. However, boundaries and acres are approximate. I disclaim responsibility for damage or liability that may arise from the use of this map.

Manchester State Forest
MSF 590 ADV TS 19
180 Acres

1 inch = 1,320 feet
Produced by:
Ben Kendall
12/14/18
0 437.5 875 1,750 2,625 3,500 Feet