

December 12, 2018

Manchester State Forest
Pine Straw Bid Invitation
MSF 591 ADV PS 19

The SC Forestry Commission, Manchester State Forest, 6740 Headquarters Road, Wedgefield, SC 29168 will accept sealed bids on the attached bid form until **11:00 AM, Monday January 7, 2019** for the sale of approximately 632 acres of longleaf pinestraw. The sale areas consist of 6 separate lots. The sale areas are described on the enclosed bid sheet and maps.

Bidders are encouraged to inspect the sale area to determine the volume estimates and raking conditions. Site visits may be made at any time. The SC Forestry Commission **will not be responsible for areas that are overbid.** **Indicate on the envelope MSF 586 ADV PS 18.**

Payment in the full amount of the bid, by **CERTIFIED CHECK PAYABLE TO THE SC FORESTRY COMMISSION** is to be made by the successful bidder. A performance bond of \$500.00 is also required before raking may begin. The successful bidders will have **90 days** to remove the straw.

All pine straw above the humus layer within the sale area may be removed by the contractor. Stands are to only be raked once during the contract period. **At no time shall an area be raked twice, even if additional needles fall within the contract period.** Access roads and the **sale area must be left free of all debris** and in reasonable condition **at all times** during the term of the contract. Contractors must repair any ditch banks knocked down to gain access to stands. Pine straw trailers may be parked in designated openings throughout the forest, but under no circumstances may they be parked on any public roads. Reasonable precautions will be taken by the state forest personnel to protect the sale areas from unauthorized raking; however, the SC Forestry Commission will not assume responsibility for loss of straw due to theft or fire at any time during the advertisement or contract period.

The successful bidder must comply with the SC Illegal Immigration Reform Act, 2008. This is done by signing a form available at the headquarters office, and may be signed on day of bid opening. Proof of commercial liability insurance for the amount of one million dollars (\$1,000,000.00) and workers compensation insurance is necessary before a contract can be signed. Contractors shall follow OSHA safety regulations and shall comply with EPA Worker Protection Standards and Migrant and Seasonal Workers Protection Act, if applicable. Special care should be taken when raking in areas where Red Cockaded Woodpeckers are present. For additional information, contact Ben Kendall at Manchester State Forest Headquarters, (803) 494-8196. South Carolina Forestry Commission reserves the right to reject any or all bids.

Ben Kendall
Assistant Forest Director

BID SHEET
MSF 591 ADV PS 19

Lot #	StandName	Acres	BID
1	MA002-0212	95	
2	MA002-0053	57	
3	MA002-0088	61	
4	MA002-0135	43	
5	MA004-0256	72	
6	MA005-7285	305	

BIDS MUST BE RECEIVED BY 11:00 AM ON Monday, January 7, 2019

Each LOT is a separate sale. Bidders may bid on as many LOTS as they like.

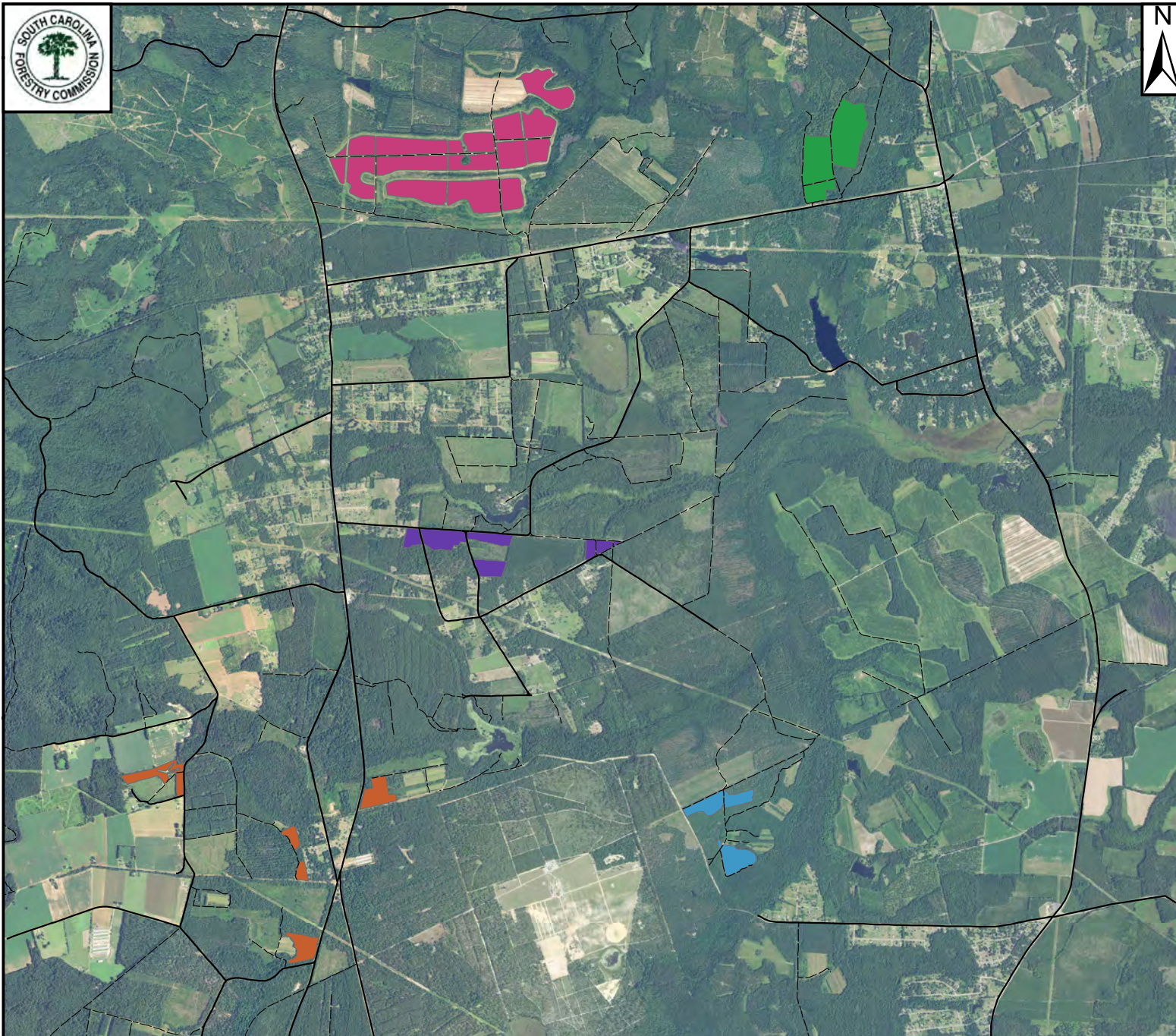
Only bids on individual LOTS will be accepted. Bid on per LOT basis.

Name _____

Address _____

Signature _____







Phone _____



Legend


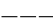
Pine Straw Raking Blocks

Stand

	MA002-0012	95 Acres
	MA002-0053	57 Acres
	MA002-0088	61 Acres
	MA002-0135	43 Acres
	MA004-0256	72 Acres
	MA005-7285	305 Acres

Roads

Road_Type

	County Road
	Forest Road

Disclaimer:
Reasonable efforts have been made to ensure the accuracy of this map. However, boundaries and acres are approximate. I disclaim responsibility for damage or liability that may arise from the use of this map.

Manchester State Forest
MSF 591 ADV PS 19

Produced by:
Ben Kendall
12/11/18